



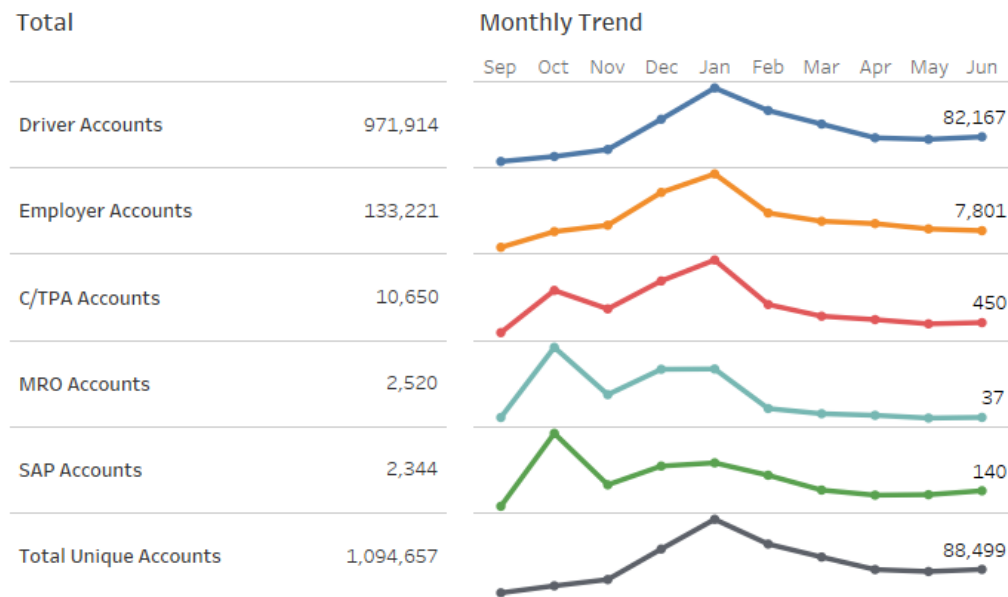
DRUG & ALCOHOL CLEARINGHOUSE

June 2020 Monthly Summary Report

REGISTRATIONS

Registration for the FMCSA Drug and Alcohol Clearinghouse (Clearinghouse) began for all user roles on September 28, 2019. User roles include: drivers, employers, consortia/third-party administrators (C/TPAs), medical review officers (MROs), and substance abuse professionals (SAPs). The graph below illustrates the number of registrations for each type of user, by month, as well as the total number of unique registrations.

USER REGISTRATIONS



This chart reflects the number of Clearinghouse users who have registered as each role (users may register as multiple roles).

In many cases, more than one user account is associated with a single organization. For a summary of the number of organizations that are registered in the Clearinghouse, see the table below.

Number of completed registrations through June 2020, as of 8:00 AM on 7/1/2020.

Organizations Registered in the Clearinghouse

122,190
EMPLOYERS

38,719
AS OWNER-OPERATORS

65,112
LINKED TO FMCSA
PORTAL ACCOUNT

7,479
C/TPAs

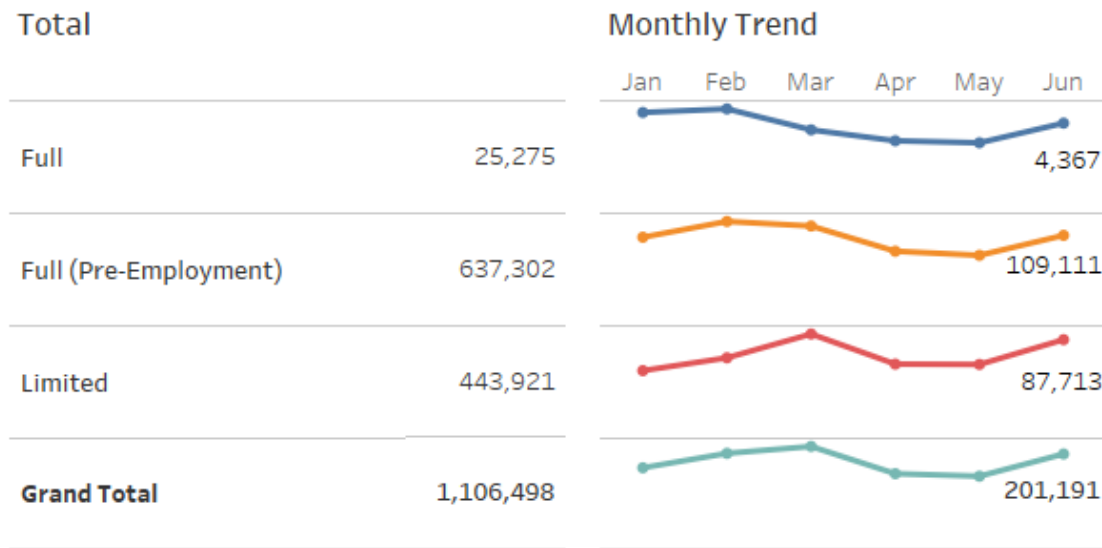
2,261
SAPs

1,462
MROs

QUERIES

Employers are required to conduct queries in the Clearinghouse when hiring a new commercial driver's license (CDL) holder and annually for all CDL drivers they currently employ.

QUERIES CONDUCTED



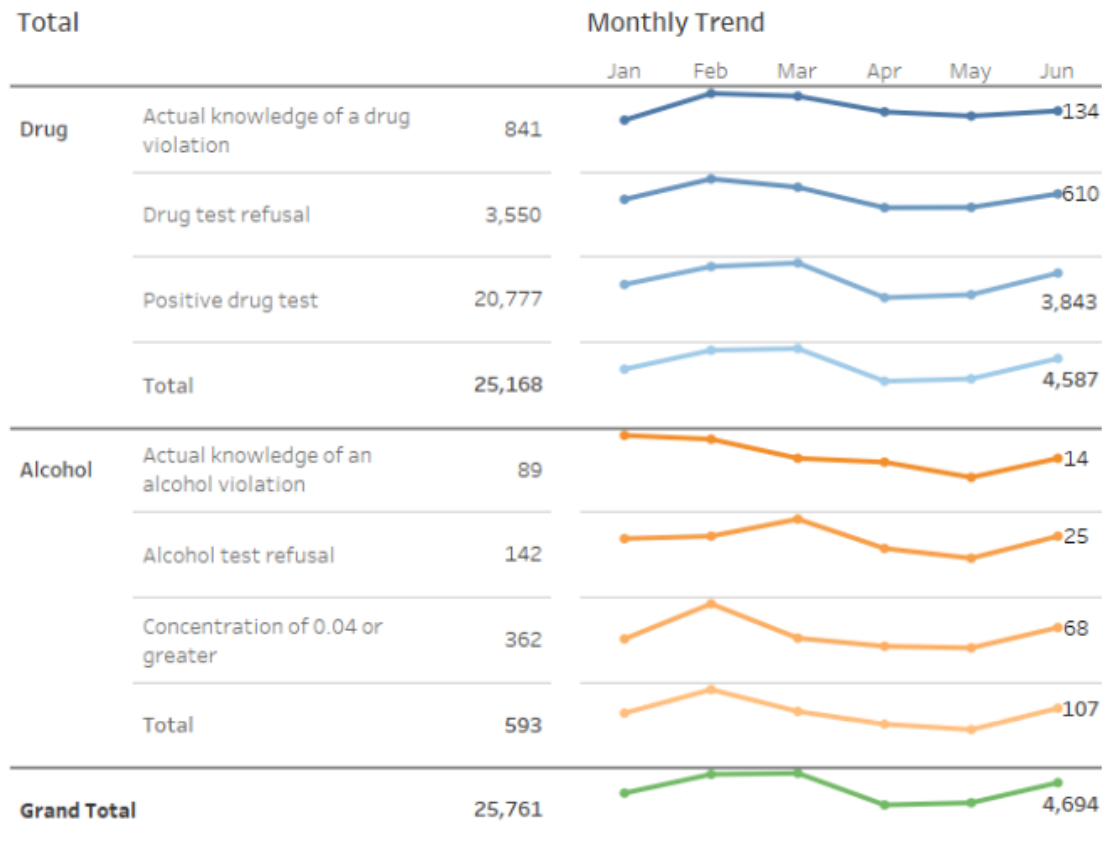
The graph illustrates the number of each type of query that has been conducted by employers, or their designated service agents, by month.

Queries conducted through June 2020, as of 8:00 AM on 7/1/2020.

VIOLATIONS REPORTED TO CLEARINGHOUSE

Employers or their designated consortia/third-party administrators (C/TPA), and medical review officers (MROs) are required to report violations of the drug and alcohol program.

VIOLATIONS



The graph to the left illustrates the number of violations that have been reported to the Clearinghouse, by month.

Violations reported or modified through June 2020, as of 8:00 AM on 7/1/2020.

VIOLATIONS REPORTED TO CLEARINGHOUSE CONTINUED

Drug and Alcohol Test Results By Test Type

(as of 7/1/2020)

| TEST TYPE | DRUG | ALCOHOL | TOTAL |
|--------------------------------|---------------|------------|---------------|
| Total Violations | 25,168 | 593 | 25,761 |
| None (Actual Knowledge) | 841 | 89 | 930 |
| Follow Up | 531 | 13 | 544 |
| Refusal | 69 | 2 | |
| Positive | 462 | 11 | |
| Post-Accident | 1,110 | 55 | 1,165 |
| Refusal | 127 | 25 | |
| Positive | 983 | 30 | |
| Pre-Employment | 13,413 | 26 | 13,439 |
| Refusal | 1,751 | 4 | |
| Positive | 11,662 | 22 | |
| Random | 8,553 | 250 | 8,803 |
| Refusal | 1,404 | 77 | |
| Positive | 7,149 | 173 | |
| Reasonable Suspicion | 443 | 157 | 600 |
| Refusal | 170 | 32 | |
| Positive | 273 | 125 | |
| Return to Duty | 277 | 3 | 280 |
| Refusal | 29 | 2 | |
| Positive | 248 | 1 | |

The table to the left notes the number of test results reported to the Clearinghouse, by type of test, for controlled substance (drug) tests, alcohol tests, and a combined total.

VIOLATIONS REPORTED TO CLEARINGHOUSE CONTINUED

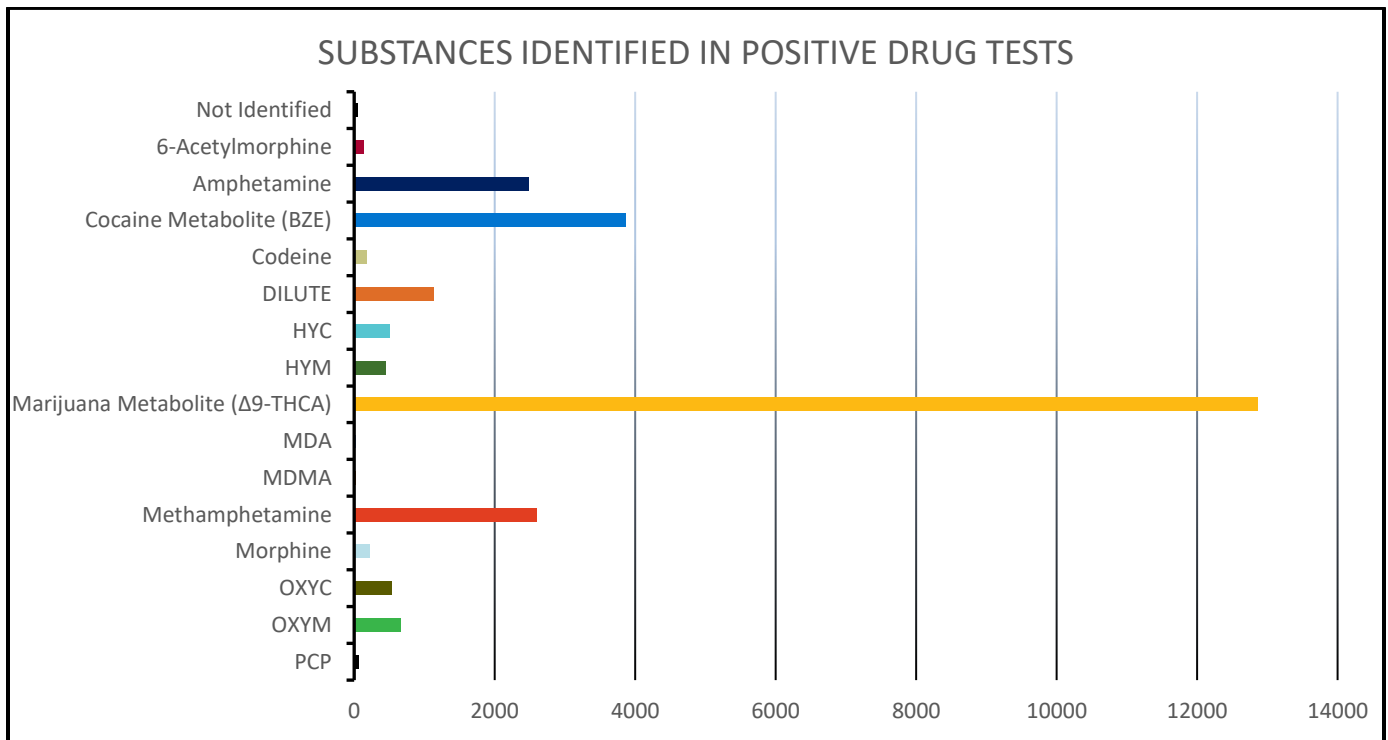
Positive drug tests account for **80%** of the total violations reported.

See chart to the right and the graph below for a breakdown of the number of times a driver tested positive for each substance.

SUBSTANCES IDENTIFIED IN POSITIVE DRUG TESTS
as of 7/1/2020

| Substance | # Tests Identified |
|--------------------------------|--------------------|
| Not Identified | 43 |
| 6-Acetylmorphine | 137 |
| Amphetamine | 2,479 |
| Cocaine Metabolite (BZE) | 3,868 |
| Codeine | 181 |
| DILUTE | 1,130 |
| HYC | 500 |
| HYM | 443 |
| Marijuana Metabolite (Δ9-THCA) | 12,867 |
| MDA | 13 |
| MDMA | 25 |
| Methamphetamine | 2,593 |
| Morphine | 215 |
| OXYC | 534 |
| OXYM | 661 |
| PCP | 58 |
| All substances | 25,747 |

Note: More than one substance can appear in a positive drug test



Positive drug tests reported as of 7/1/2020

RETURN-TO-DUTY PROCESSES

If a driver has a drug and alcohol program violation recorded against him or her in the Clearinghouse, that driver must be removed from safety-sensitive functions, including operating a commercial motor vehicle, until he or she has completed a return-to-duty (RTD) process. Select milestones of a driver's RTD process are recorded in the Clearinghouse. The table below provides a snapshot of the number of drivers who had an open or resolved RTD process in the Clearinghouse as of July 1, 2020.

Drivers in the Return-to-Duty (RTD) Process

as of 7/1/2020

| RTD STATUS | # DRIVERS |
|-------------------------------------------------|---------------|
| All Drivers (with at least 1 violation) | 24,076 |
| Drivers in Prohibited Status | 22,631 |
| RTD Process Not Started | 18,448 |
| Substance Abuse Professional (SAP) Request Sent | 236 |
| SAP Designation Confirmed | 382 |
| SAP Request Declined | 38 |
| Initial SAP Assessment Complete | 1,015 |
| Determined Eligible for RTD Testing | 2,512 |
| Drivers in Not-Prohibited Status | 1,445 |
| RTD Test with Negative Results | 1,445 |
| Follow-Up Testing Plan Complete | 0 |