



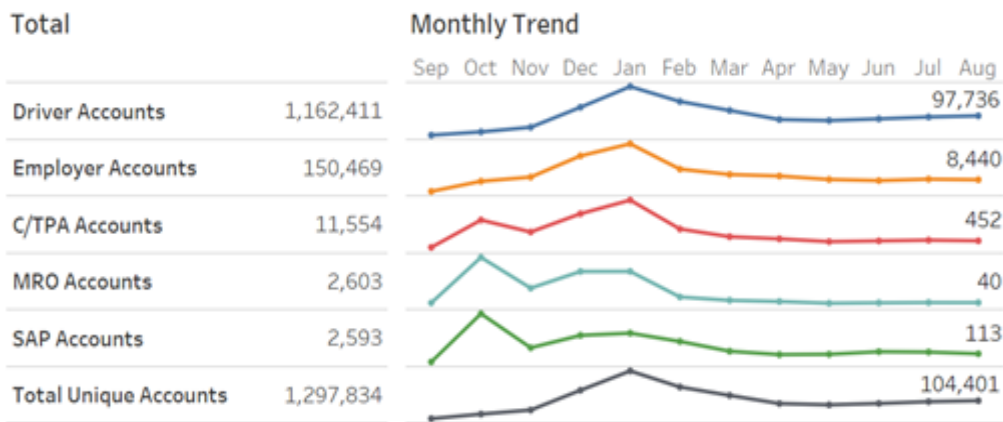
DRUG & ALCOHOL CLEARINGHOUSE

August 2020 Monthly Summary Report

REGISTRATIONS

Registration for the FMCSA Drug and Alcohol Clearinghouse (Clearinghouse) began for all user roles on September 28, 2019. User roles include: drivers, employers, consortia/third-party administrators (C/TPAs), medical review officers (MROs), and substance abuse professionals (SAPs). The graph below illustrates the number of registrations for each type of user, by month, as well as the total number of unique registrations.

USER REGISTRATIONS



Number of completed registrations through August 2020, as of 8:00 AM on 9/1/2020.

This chart reflects the number of Clearinghouse users who have registered as each role (users may register as multiple roles).

In many cases, more than one user account is associated with a single organization. For a summary of the number of organizations that are registered in the Clearinghouse, see the table below.

Organizations Registered in the Clearinghouse

138,366

EMPLOYERS

45,941

AS OWNER-OPERATORS

75,059

LINKED TO FMCSA
PORTAL ACCOUNT

8,128

C/TPAs

2,487

SAPs

1,519

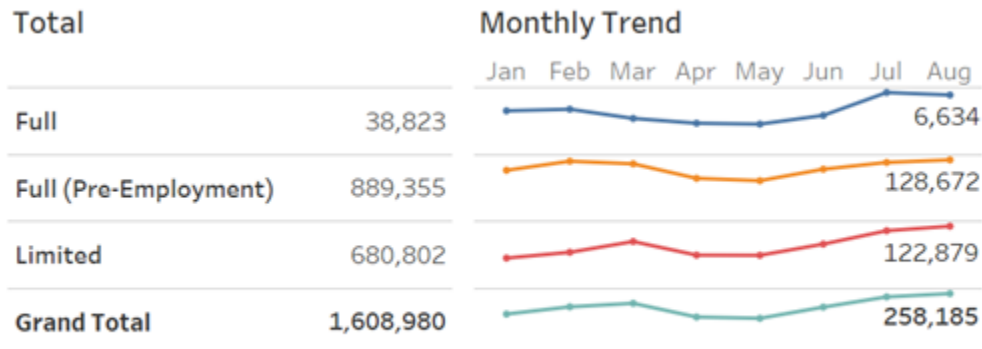
MROs

Organizations registered as of 9/1/2020

QUERIES

Employers are required to conduct queries in the Clearinghouse when hiring a new commercial driver’s license (CDL) holder and annually for all CDL drivers they currently employ.

QUERIES CONDUCTED



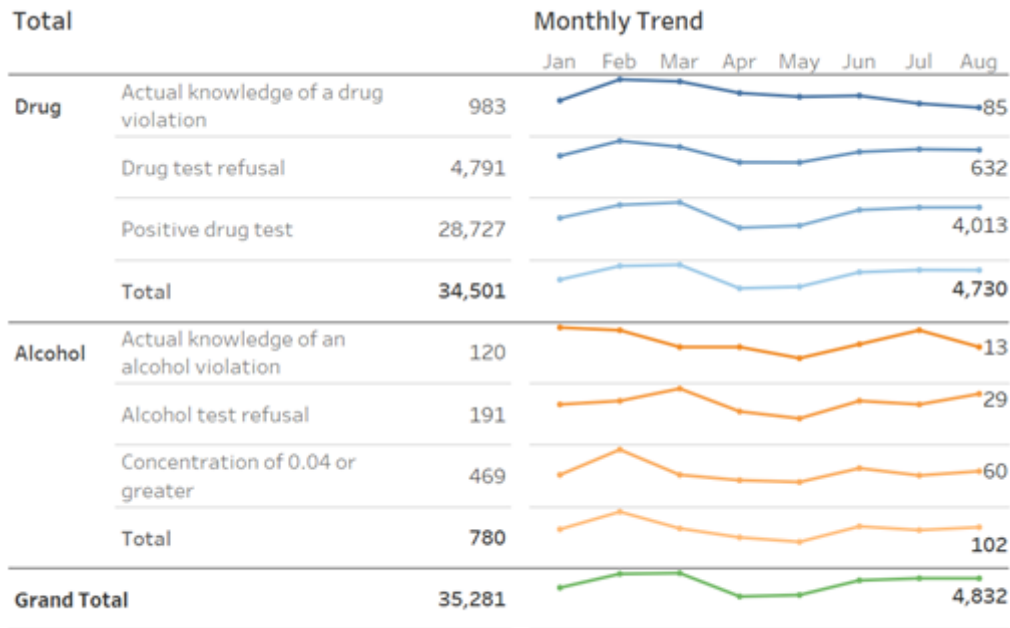
The graph illustrates the number of each type of query that has been conducted by employers, or their designated service agents, by month.

Queries conducted through August 2020, as of 8:00 AM on 9/1/2020.

VIOLETIONS REPORTED TO CLEARINGHOUSE

Employers or their designated consortia/third-party administrators (C/TPA), and medical review officers (MROs) are required to report violations of the drug and alcohol program.

VIOLETIONS



The graph to the left illustrates the number of violations that have been reported to the Clearinghouse, by month.

Violations reported or modified through August 2020, as of 8:00 AM on 9/1/2020.

VIOLATIONS REPORTED TO CLEARINGHOUSE CONTINUED

Drug and Alcohol Test Results By Test Type

(as of 9/1/2020)

TEST TYPE	DRUG	ALCOHOL	TOTAL
Total Violations	34,501	780	35,281
None (Actual Knowledge)	983	120	1,103
Follow Up	724	21	745
Refusal	88	2	
Positive	636	19	
Post-Accident	1,494	64	1,558
Refusal	182	28	
Positive	1,312	36	
Pre-Employment	18,347	28	18,375
Refusal	2,295	7	
Positive	16,052	21	
Random	11,955	348	12,303
Refusal	1,954	112	
Positive	10,001	236	
Reasonable Suspicion	589	193	782
Refusal	227	40	
Positive	362	153	
Return to Duty	409	6	415
Refusal	45	2	
Positive	364	4	

The table to the left notes the number of test results reported to the Clearinghouse, by type of test, for controlled substance (drug) tests, alcohol tests, and a combined total.

VIOLATIONS REPORTED TO CLEARINGHOUSE CONTINUED

Positive drug tests account for **81%** of the total violations reported.

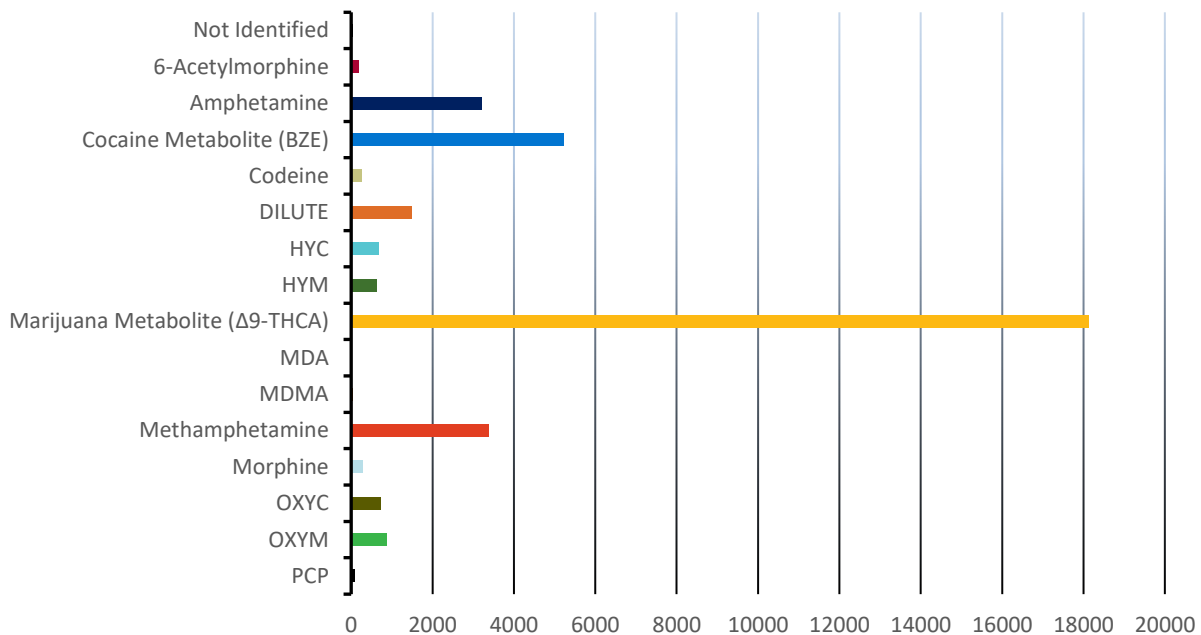
See chart to the right and the graph below for a breakdown of the number of times a driver tested positive for each substance.

SUBSTANCES IDENTIFIED IN POSITIVE DRUG TESTS
as of 9/1/2020

Substance	# Tests Identified
Not Identified	43
6-Acetylmorphine	185
Amphetamine	3,208
Cocaine Metabolite (BZE)	5,233
Codeine	253
DILUTE	1,495
HYC	683
HYM	615
Marijuana Metabolite (Δ 9-THCA)	18,120
MDA	20
MDMA	40
Methamphetamine	3,379
Morphine	293
OXYC	730
OXYM	875
PCP	80
All substances	35,252

Note: More than one substance can appear in a positive drug test

SUBSTANCES IDENTIFIED IN POSITIVE DRUG TESTS



Positive drug tests reported as of 9/1/2020

RETURN-TO-DUTY PROCESSES

If a driver has a drug and alcohol program violation recorded against him or her in the Clearinghouse, that driver must be removed from safety-sensitive functions, including operating a commercial motor vehicle, until he or she has completed a return-to-duty (RTD) process. Select milestones of a driver's RTD process are recorded in the Clearinghouse. The table below provides a snapshot of the number of drivers who had an open or resolved RTD process in the Clearinghouse as of September 1, 2020.

Drivers in the Return-to-Duty (RTD) Process

as of 9/1/2020

RTD STATUS	# DRIVERS
All Drivers (with at least 1 violation)	32,866
Drivers in Prohibited Status	30,179
RTD Process Not Started	23,765
Substance Abuse Professional (SAP) Request Sent	260
SAP Designation Confirmed	572
SAP Request Declined	62
Initial SAP Assessment Complete	1,410
Determined Eligible for RTD Testing	4,110
Drivers in Not-Prohibited Status	2,687
RTD Test with Negative Results	2,687
Follow-Up Testing Plan Complete	0